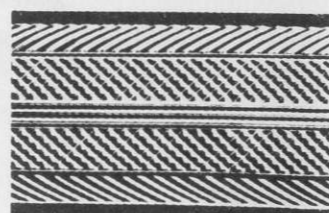
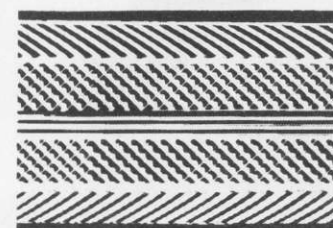


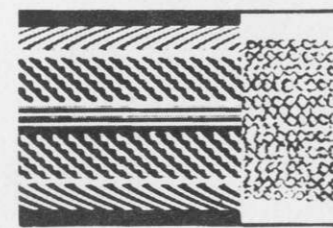
NEO PRO
 Combines lightness with performance, ideal for racing training.
 Weight 260g - PSI: 90/105
 24 threads/cm
 Section: 21,5mm



PRO SP1
 Reinforced version of the Pro 84. Very effective against punctures so it's a good tire for rough road conditions.
 Weight: 255g - Section: 21,7mm - PSI: 90/105 - 37 threads/cm.



STRADA 80
 Strong-Fast tubular. Ideal for training. Flat molded for easy mounting and also folds for transporting easy.
 Weight: 315g - Section: 22mm.
 PSI: 90/105 - 13 threads/cm.



INVULNERABLE 84
 Only tire in the world with a stainless steel mesh under the tread. Protects it from 2 out of 3 punctures.
 Weight: 290g - PSI 90/105
 Section: 21,55mm - 24 thread/cm

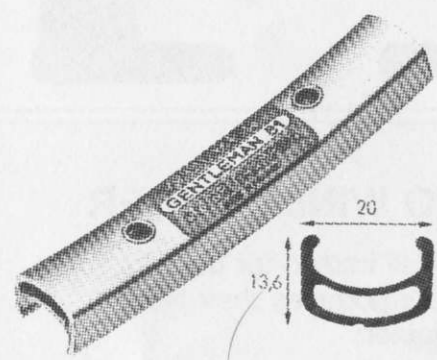
PROFIL T.B.

A new "Profile" the Fat tubular. Tapered tread, exceptional resistance to wear and tear. Dropped walls, moulded beads-easy mounting and perfect centering on the rim.
 Weight: 270g - Section: 21mm at 6 bars (90 psi).
 Casing made of fine Egyptian cotton. 24 threads/cm.

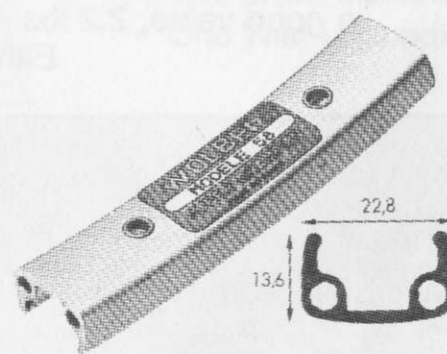


rims

CLINCHER RIMS

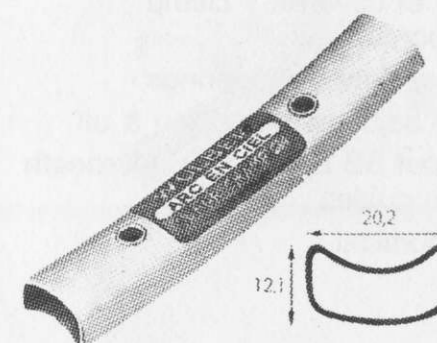


GENTLEMAN 81
 Designed for narrow section tires (19-25mm) 36 Holes
 Weight: 470g - 700c only

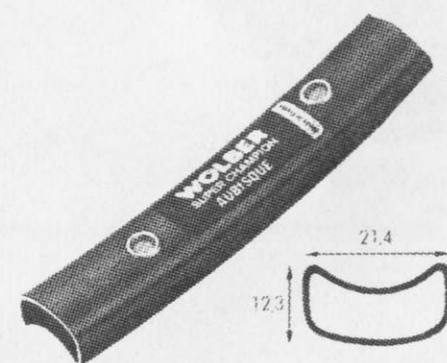


MODEL 58
 Light, Tough and dependable. Particularly recommend for tandem and heavy loaded touring bicycles.
 Weight: 555g - Satin finish
 36 holes 700c and 27"

TUBULAR RIMS



ARC EN CIEL
 For training, road races and time trials.
 36 holes available
 Weight: 345g - double eyelets.



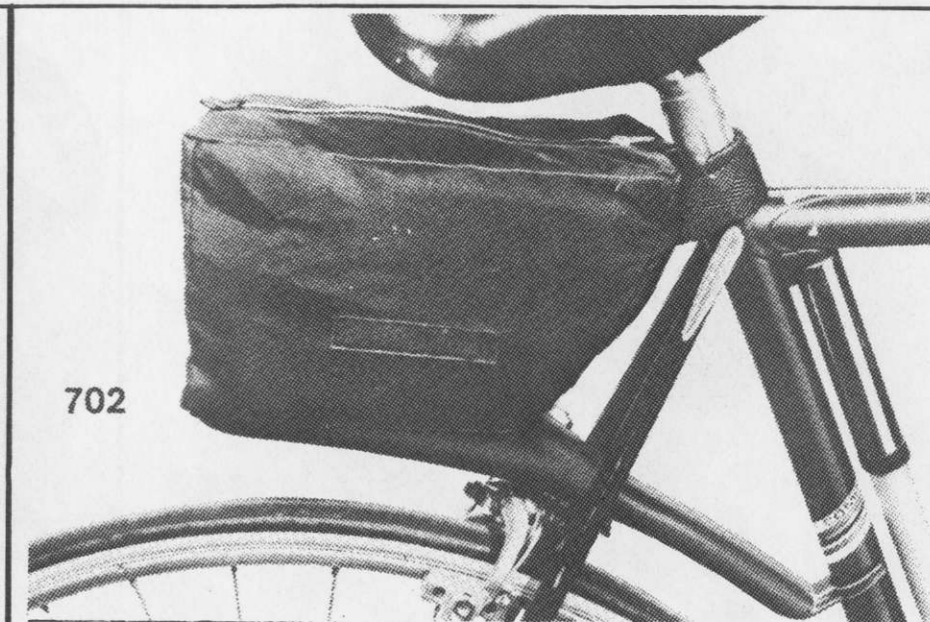
AUBISQUE
 Dark grey anodized. Recommended for professional road racing.
 Weight: 400g - 32 & 36 Holes Double Eyelets.

We carry a full line of Wolber and SuperChampion this is just a few. We also carry LHR Ridgerider tires and LHR tubes. See Price list.



REF.

- (A) 74 REG racing toe clip, chrome plated steel, available in small, medium, large.
- (B) 77 REG commuter toe clip, chrome plated steel.
- (C) 78 REG commuter clip with leather shoe protectors. Chrome plated steel.
- (D) 73.9 REG toe straps, available in: black, red, blue, white and tan.
- (E) 316 REG felt water bottle cover, colors: blue, black and green.
 79 REG racing toe clips, plasticized black steel; in small, medium and large.



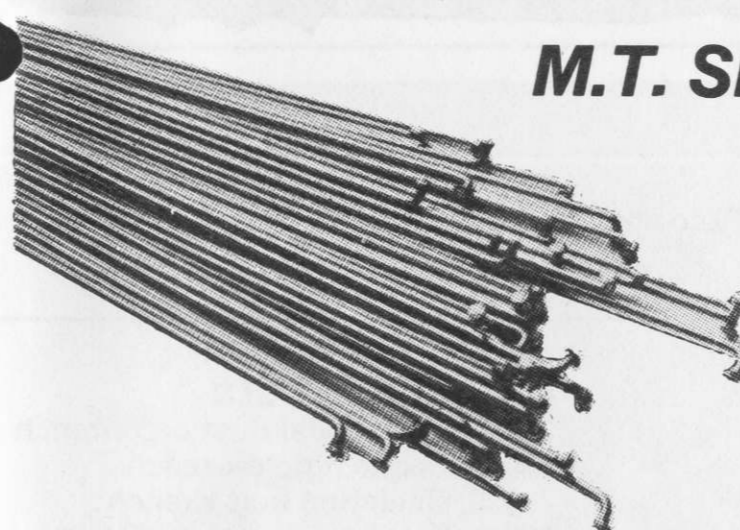
702

Racing mudguard with bag—Innovative clip on fender with collapsible waterproof blue nylon bag with zipper top. Ideal for day trips, mounting takes seconds. Ref. 702.



403

REG 403 Sky Helmet available in assorted colors. Sizes: 52-61.
 REG 125 Super Foot Pump, high pressure pump with gauge. Presta valve.



M.T. SPOKES

M.T. SPOKES Various professional racing teams choose M.T. Spokes for the sought after durability they offer. They are constructed of highly polished stainless steel with brass nipples included. Packaged in boxes of 100 they come in the following lengths 295, 298, 300, 302, 305. 14 gauge (2mm)



HANDBUILD WHEELS

Handbuilt wheels are available in two models; The New Racer Wheel with Zeus New Racer hubs, Wolber SuperChampion 'Gentleman' rims, and M.T. stainless steel spokes. 700c-Clinchers.

The Zeus-2000 Wheel with Z-2000 hubs, Wolber SuperChampion 'Arc-En-Ciel' tubular rims, and the M.T. stainless steel spokes.



REF

- (A) 701 REG spare tire holder, snaps on rails (card-20)
- (B) 749 Brake cable clamps-asst. colors (card-50)
- (C) 635 Plastic clip-on chain hangers (card-20)
- (D) 738 REG toe straps w/buttons, asst. colors (12prs.-card)
- (E) Clip-on brake cable clamps (card-50)